

Mastertech VCI Trio Quick Setup Guide

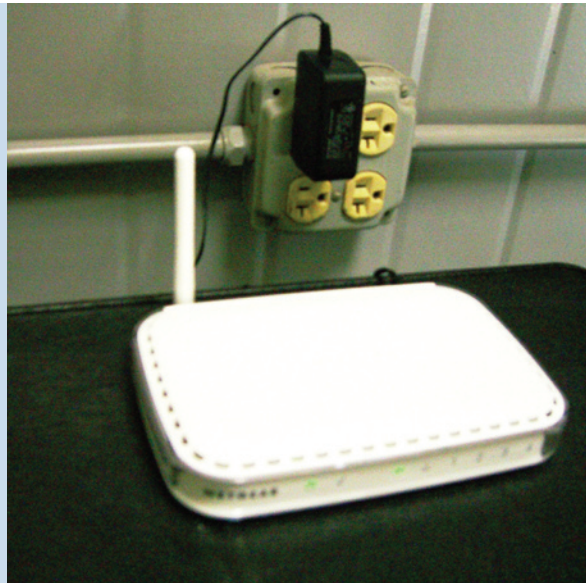
Mastertech VCI Trio Quick Start Instructions



Step 1 - Plug in the Router

Place the router in an open location & connect to AC power

The router is "Ready" when the "Check" light is extinguished and the "Wireless" light is illuminated



Step 2 - Plug in the M-VCI Module

Connect the VCI to the vehicle's underdash DLC

The M-VCI is "Ready" when the "Power" light is illuminated.
For best results, place the M-VCI module on top of the dash.



For detailed instructions on using your M-VCI scan tool, click on the "VCI Getting Started" icon located on your desktop.



Step 3 - Get the PC Ready

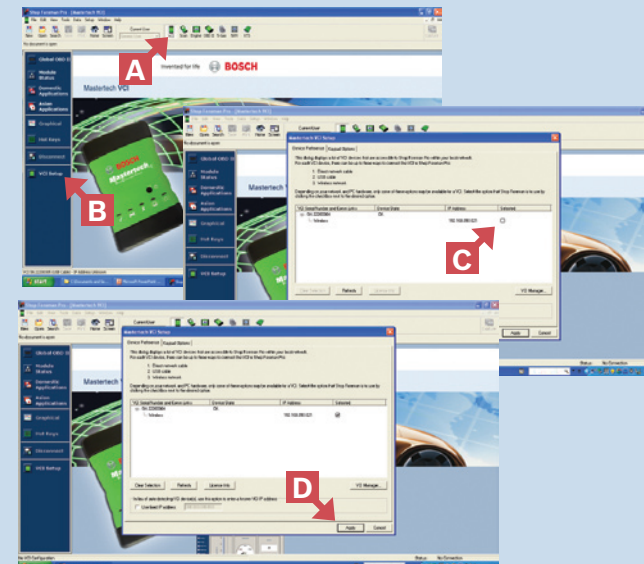
Unpack the PC, Install the battery, & power-up



Step 4 - Start Diagnosing the Vehicle Using These Easy Steps

First, open the Shop Foreman Pro program on your PC, then follow these steps:

- A - Select "VCI Icon"
- B - Select "VCI Setup"
- C - Select the "wireless" M-VCI
- D - Select "Apply"
- E - Select a menu "Application"



This screen illustrates the "Asian Applications" Selection



WAIT for an IP Address to appear here. You are ready to start diagnosing when it appears.

Please note: These instructions are for a single M-VCI scan tool. For multiple M-VCI's, or shop network integration, please refer to your supplied manuals.